

ARCHITECTS PI

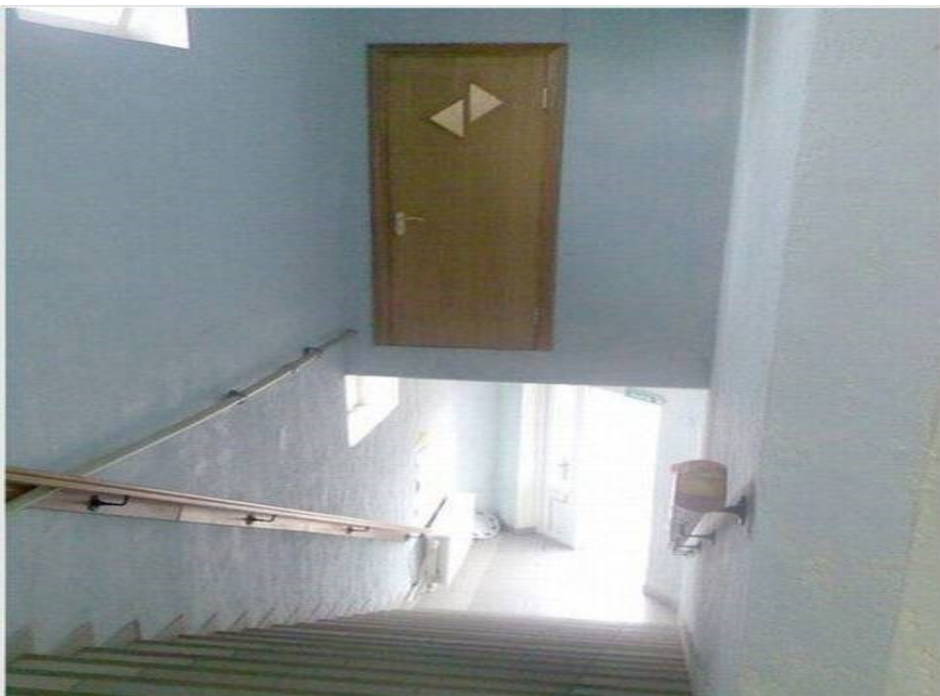
Campion

Feb 2016

ANYBODY CAN MAKE A MISTAKE

A lot of people believe they don't need Professional Indemnity as they only carry out very small projects or they are unlikely to make a mistake. This may be true, but no matter how convinced you are that you have done a good job, it does not prevent a client from alleging otherwise. If a customer or client alleges negligence on your part, the Professional Indemnity Policy will first and foremost pay the legal costs involved in defending you, irrespective of whether you are at fault, subject to the terms & conditions of the Policy Wording.

By allowing Campion Insurance to quote your Professional Indemnity cover, you can be assured that you have a broker working on your behalf that has access to over 120 potential markets. We will search these markets to get you with the best possible cover based on your needs and wants.



"Knock, Knock"

- Architects owe a 'Duty Of Care' to their clients and any injury or loss suffered as a result of a breach of that duty can form the basis for a claim of negligence, not only from the client but also from third parties.