



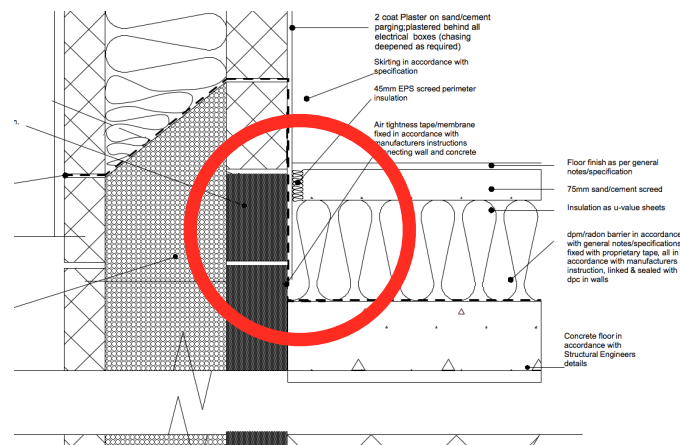
Mark Stephens
Architects

IMPORTANT FOR CONTRACTORS

#9 AIRTIGHTNESS - PROBLEM LOCATIONS

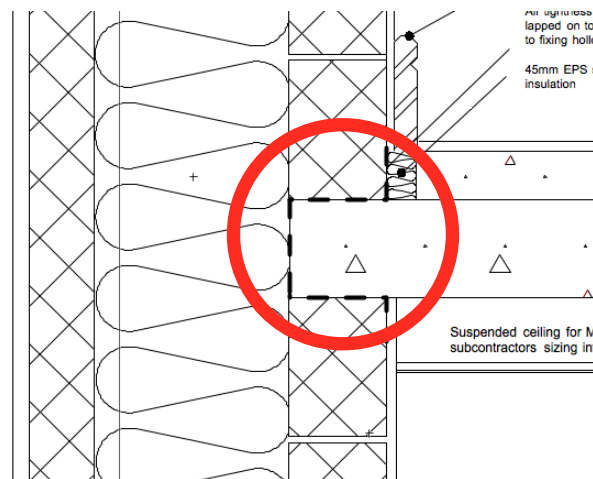
The following are critical locations where airtightness can be forgotten. This Advice Note (9) should be read in conjunction with [Advice Note #6 Airtightness](#)

1. Junction wall to floor



The airtightness membrane can either be fixed to screed or sub-floor

2. Junction wall to intermediate floor



The airtightness membrane should be in place prior to fixing intermediate floors (including concrete hollowcore). The membrane fully seals from lower wall, around end of floor to upper wall

• Using WBP ply over the membrane prior to lowering hollowcore prevents damage

- DO NOT FIT ANY SUSPENDED CEILING FRAMES PRIOR TO MASTICING/PLASTERING THE WALLS

OFFICE

Bridge Street
Swinford
Co. Mayo
Ireland

MOBILE

085 159 4084

TEL

094 92 52514

EMAIL

info@markstephensarchitects.com

WEB

MarkStephensArchitects.com