



Extension/Renovation to traditional Irish cottage Shrile County Mayo

Mark Stephens
Architects

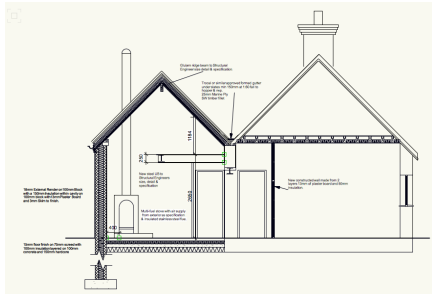
DESCRIPTION:

This project is a traditional yet contemporary extension and refurbishment to a traditional Irish cottage.

Mark Stephens Architects provided a full architectural service from inception to completion.

The project includes a new bedroom, living/play room, utility, bathroom, artists studio and mezzanine into an extension of just 23m².

Contractor: John Donoghue of
Derry Quay Construction
<http://donoghueconstruction.com/>



OFFICE
Bridge Street
Swinford
Co. Mayo
F12 PX21 Ireland

MOBILE
085 159 4084

TEL
094 92 52514

EMAIL
info@markstephensarchitects.com

WEB
MarkStephensArchitects.com